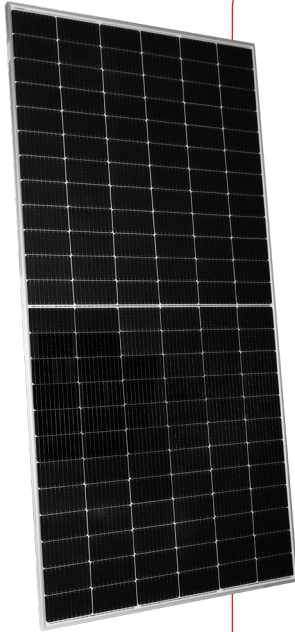


# Ultra V Pro

144 HALF-CELL N-type MONOFACIAL

# 550-570W

STPXXXS - C72/Vmh



## Features



### High module conversion efficiency

Module efficiency up to 22.1% achieved through advanced cell technology and manufacturing process



### Suntech current sorting process

Up to 2 % power loss caused by current mismatch could be diminished by current sorting technique to maximize system power output



### Excellent weak light performance

More power output in weak light condition, such as cloudy, morning and sunset



### Lower operating temperature

Lower operating temperature and temperature coefficient increases the power output



### Extended wind and snow load tests

Module certified to withstand extreme wind (2400 Pascal) and snow loads (5400 Pascal) \*



### Withstanding harsh environment

Reliable quality leads to a better sustainability even in harsh environment like desert, farm and coastline

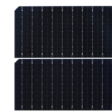
Certifications and standards:  
IEC 61215, IEC 61730, conformity to CE



## Trust Suntech to Deliver Reliable Performance Over Time

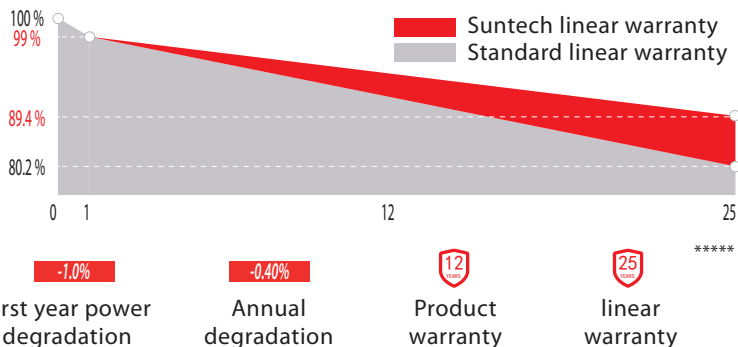
- World-class manufacturer of crystalline silicon photovoltaic modules
- Rigorous quality control meeting the highest international standards: ISO 9001, ISO 14001 and ISO17025
- Regular independently checked production process from international accredited institute/company
- Tested for harsh environments (IEC 61701, IEC 62716, DIN EN 60068-2-68) \*\*\*\*
- Long-term reliability tests
- 2 x 100% EL inspection ensuring defect-free modules

## Special Cell Design



Half-cell and MBB technology design with ultra-thin dielectric film to isolate metal and semiconductor can achieve carrier tunneling effect to ensure carrier conduction and increase power output.

## Industry-leading Warranty based on nominal power



## IP68 Rated Junction Box



The Suntech IP68 rated junction box ensures an outstanding waterproof level, supports installations in all orientations and reduces stress on the cables.

\* Please refer to Suntech Standard Module Installation Manual for details. \*\* Suntech reserves the right to the final interpretation of the warranty by Munich Re.  
\*\*\* WEEE only for EU market. \*\*\*\* Please refer to Suntech Product Near-coast Installation Guide for details.  
\*\*\*\*\* Please refer to Suntech Limited Warranty for details.

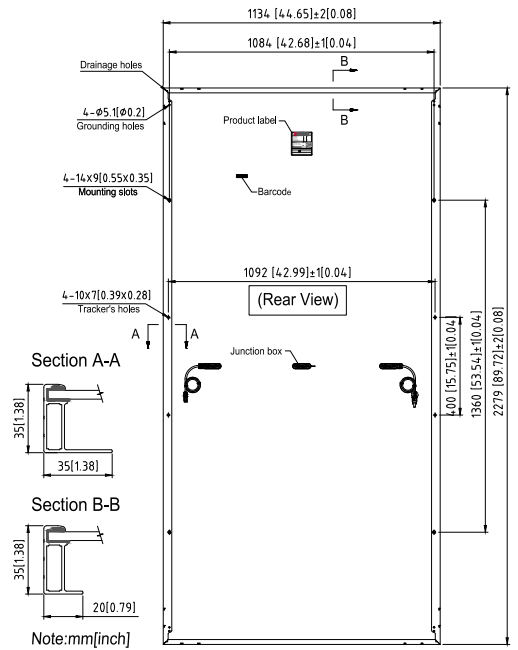
### Electrical Characteristics

STC	STPXXXS-C72/Vmh				
Maximum Power at STC (Pmax)	570W	565W	560W	555W	550W
Optimum Operating Voltage (Vmp)	42.72V	42.56V	42.40V	42.24V	42.05V
Optimum Operating Current (Imp)	13.34A	13.28A	13.21A	13.14A	13.08A
Open Circuit Voltage (Voc)	50.55V	50.39V	50.23V	50.07V	49.88V
Short Circuit Current (Isc)	14.36A	14.30A	14.24A	14.17A	14.11A
Module Efficiency	22.1%	21.9%	21.7%	21.5%	21.3%
Operating Module Temperature	-40 °C to +85 °C				
Maximum System Voltage	1500 V DC (IEC)				
Maximum Series Fuse Rating	25 A				
Power Tolerance	0/+5 W				

STC: Irradiance 1000 W/m<sup>2</sup>, module temperature 25 °C, AM=1.5;  
 Tolerance of Pmax is within +/- 3% ;  
 For tracker installation, please turn to Suntech for mechanical load information.

NMOT	STPXXXS-C72/Vmh				
Maximum Power at NMOT (Pmax)	434.8W	431.3W	427.3W	423.6W	419.8W
Optimum Operating Voltage (Vmp)	39.5V	39.3V	39.2V	39.0V	38.8V
Optimum Operating Current (Imp)	11.01A	10.96A	10.91A	10.85A	10.81A
Open Circuit Voltage (Voc)	47.8V	47.7V	47.5V	47.4V	47.2V
Short Circuit Current (Isc)	11.59A	11.54A	11.49A	11.43A	11.38A

NMOT: Irradiance 800 W/m<sup>2</sup>, ambient temperature 20 °C, AM=1.5, wind speed 1 m/s.



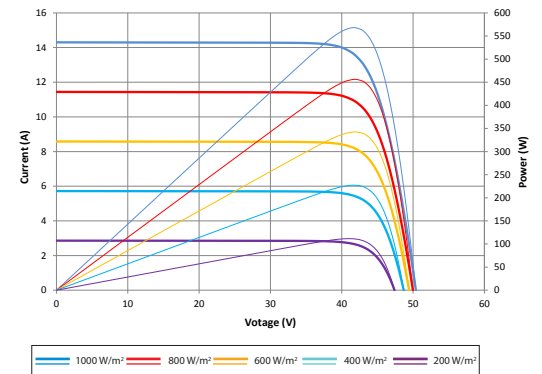
### Temperature Characteristics

Nominal Module Operating Temperature (NMOT)	42 ± 2 °C
Temperature Coefficient of Pmax	-0.320%/°C
Temperature Coefficient of Voc	-0.260%/°C
Temperature Coefficient of Isc	0.046%/°C

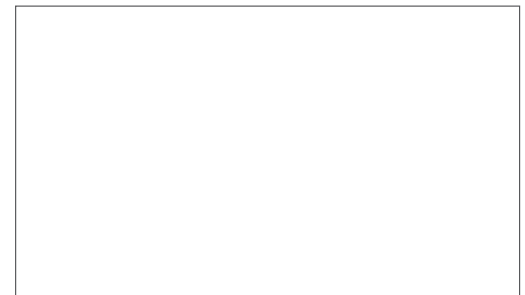
### Mechanical Characteristics

Solar Cell	N-type 182 mm
No. of Cells	144 (6 × 24)
Dimensions	2279 × 1134 × 35 mm (89.7 × 44.6 × 1.4 inches)
Weight	29.1 kgs (64.2 lbs.)
Front Glass	3.2 mm (0.126 inches) fully tempered glass
Frame	Anodized aluminium alloy
Junction Box	IP68 rated (3 bypass diodes)
Output Cables	4.0 mm <sup>2</sup> , Portrait: (-) 350 mm and (+) 160 mm in length or customized length

Current-Voltage & Power-Voltage Curve (570S)



### Dealer information



### Packing Configuration

Container	40' HC
Pieces per pallet	31
Pallets per container	20
Pieces per container	620
Packaging box dimensions	2310×1130×1255 mm
Packaging box weight	965 kg